

## **Historic, Archive Document**

Do not assume content reflects current scientific knowledge, policies, or practices.



62,73

Return after 5 days to

# MUSSER FORESTS, Inc.

INDIANA, PA.

Return Postage Guaranteed



## 10 Blue Spruce \$3

*The King of Ornamentals*

Very superior stock.

Well branched.

5-yr.-old Transplants, 6"-12" tall

Sent Postpaid at Planting Time

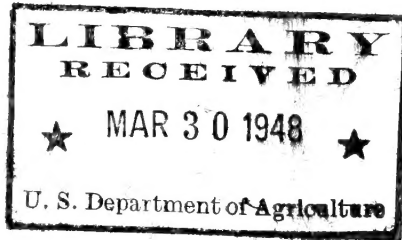


## 15 American \$3 Arborvitae

For Hedge Work or Specimen Trees

5 - Year - Old Transplants. Healthy  
Trees, 6 to 12 inches high. Sent  
postpaid at planting time.

1948



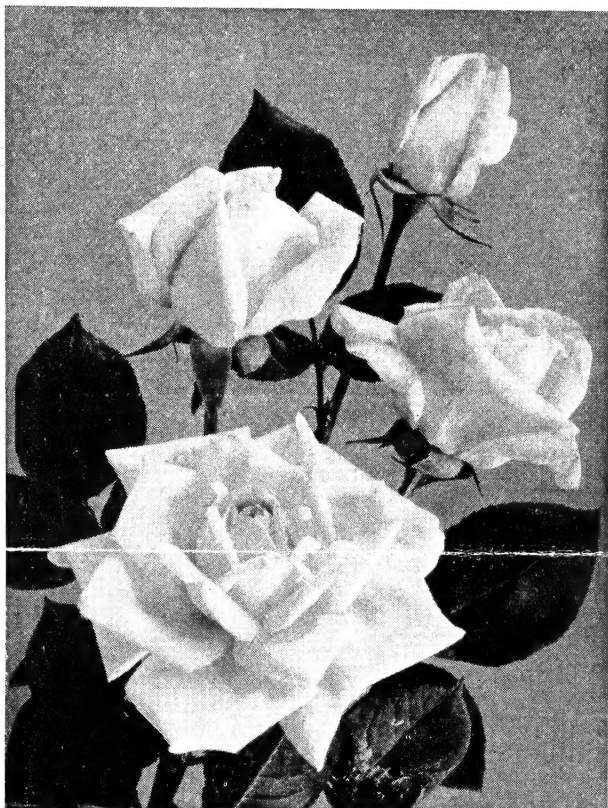
P. L. & R.  
Sec. 562

U.S. Dept. of Agriculture  
Library  
Washington 25, D. C.





**Musser Nurseries** Present . . . . . America's Greatest **VALUE** In



# Hybrid Tea Roses

Hardy — NORTHERN FIELD GROWN

QUALITY PLANTS — Guaranteed True To Name

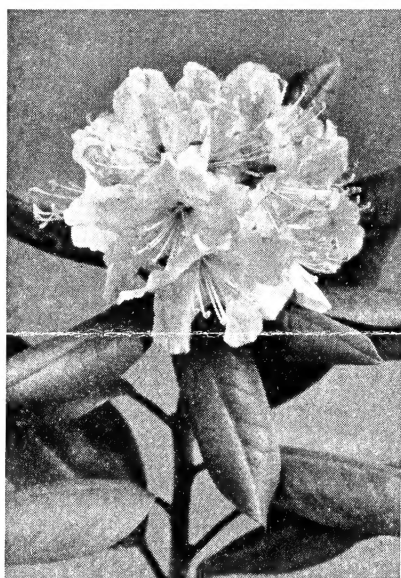
Each plant EXPERTLY PRUNED ready for PROPER PLANTING. No large, thorny, dead, woody tops to wrestle with after planting. These Roses have been selected as being very generous bloomers, as well as for the breath-taking perfection of each individual flower. You may cut freely for home decoration throughout the summer, which only encourages the vigorous plants to put forth more blooms.

- 3 Red — ETOILE DE HOLLANDE  
(Conceded to be best red rose)
- 1 Pink — EDITH NELLIE PERKINS
- 1 Yellow — GOLDEN DAWN
- 1 White — FRAU KARL DRUSCHKI

*Free* { Plus One RED CLIMBING ROSE } *Free*  
(Paul's Scarlet)

**All 7 Roses** for only **\$6.95** postpaid

EXCEPTIONAL QUALITY     **RHODODENDRON**     NURSERY GROWN



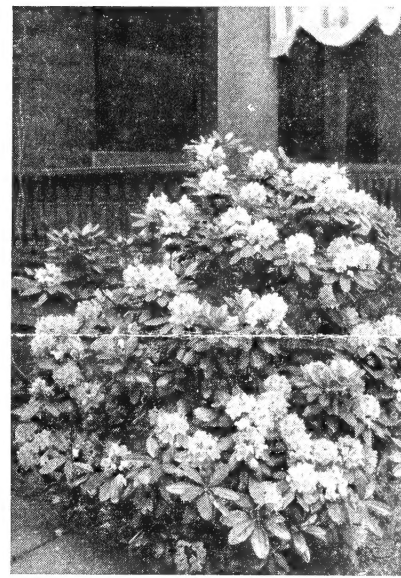
Individual Flower



Young Plant



Full Grown Plant

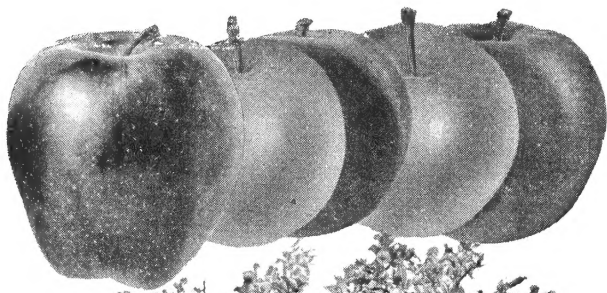


**RHODODENDRON, MAXIMUM (Hardy)** — One of the few evergreens that will grow in full shade. Large leaf, best foliage of any of the Rhododendrons. Bears large clusters of gorgeous flowers, shaded from white to shell pink, during late June and early July. Prefers PARTIAL shade and moist, acid soil. Cultivation is undesirable, as roots are shallow. A heavy mulch of vegetable humus is recommended.

Shipped Express Collect — Lots of 10 at 100 rate		Per 100
4-10 in.	1 to 3 branches (Seedlings) .....	50.00
4-8 in.	Select 3 to 5 branches (Transplanted) .....	75.00
8-12 in.	Select 3 to 5 branches (Transplanted) .....	95.00
12-18 in.	Select 3 to 6 branches (Twice Transplanted) .....	125.00

**RHODODENDRON, HYBRID GRAFTED** — This variety of Rhododendron PREFERS sunlight. Similar to Maximum described at left, but color of blooms varies from rich shell pink to DEEP RED. 10" to 13". Shipped express collect, each plant balled and burlapped. EACH, \$3.75.

**Musser Forests, Inc.**  
 THOROUGHbred NORTHERN GROWN NURSERY STOCK  
 INDIANA, PENNSYLVANIA



5 in 1 APPLE TREE (5 varieties on one tree)

# Musser FRUIT TREES

*Beauty in Spring - Harvest in Fall*

**5 in 1 APPLE TREE** — Five varieties of apples on 1 tree. Yellow Delicious, Red Rome Beauty, Red Delicious, Stayman's Winesap, Yellow Transparent. Plant several of these novel trees for beauty and shade . . . as well as for fruit that matures over a long period.

	Each	Per 3	Per 10
4-6 ft., well branched .....	<b>ONLY \$3.75</b>	<b>\$10.50</b>	<b>\$30.00</b>

**DWARF FRUIT TREES.** Where space is limited plant these dwarf trees. They do not spread more than 10-15 ft. Most varieties start producing fruit first year after planting. Produce fruit as large or larger than standard trees. Plant two (2) or more varieties for pollination

	Each	Per 3	Per 10
<b>DWARF APPLE TREES</b> 3-4 ft. Cortland, Red McIntosh, Red Delicious, Early McIntosh .....	<b>\$3.75</b>	<b>\$10.50</b>	<b>\$30.00</b>

<b>DWARF PEAR TREES</b> 3-4 ft. Bartlett, Clapp's Favorite .....	<b>\$3.75</b>	<b>\$10.50</b>	<b>\$30.00</b>
--	---------------	----------------	----------------

<b>STANDARD APPLE TREES</b> 5-6 ft. Your choice of those listed below. Plant 2 or more varieties for successful pollination. ....	<b>\$2.00</b>	<b>\$ 5.70</b>	<b>\$18.00</b>
---	---------------	----------------	----------------

**EARLY McINTOSH** (Ripens August). Bright red early apple. The flesh is white, tender and juicy with fine flavor. Ideal dessert apple.

**YELLOW TRANSPARENT** (Ripens August). Early, flavor acid and very good, making it excellent for cooking. Trees hardy and abundant bearers.

**YELLOW DELICIOUS** (Ripens Oct.-Mar.). Bright, golden yellow apple of excellent quality. Firm crisp and very juicy. Finest yellow apple. Bears young and heavily.

**RED McINTOSH** (Ripens October). Very attractive red apple of highest quality. Tender, juicy, and refreshing. Hardy. Bears young and annually.

**CORTLAND** (Ripens Nov.-Feb.). Large red fruit similar to McIntosh. Very hardy and desirable as a cross pollinator.

**RED DELICIOUS** (Ripens Dec.-Feb.). Large dark red apple with crisp fine-grained flesh — excellent flavor.

(All trees shipped express collect. Complete planting instructions with order acknowledgment.)

# EVERGREEN HEDGES

## DESCRIPTION

Pines, Spruce, Hemlock, Arborvitae, and Japanese Yew can be sheared and developed into beautiful lasting hedges. They can be kept to almost any height for years. Start with small plants and shear the new tender growth each year to desired form and height. Shearing is easy. Simple instructions with order acknowledgment. Shearing is done from June 15 to July 31.

## SPACING FOR HEDGES OR WINDBREAKS

**LOW** Clipped Hedge, 8-10 in. apart (For wider hedge, use double rows, 12 inches apart)

**MEDIUM** Hedge, 3 to 4 feet high plant 1 to 2 feet apart

**TALL** Hedge ..... plant 3 to 5 feet apart

			Per 100	Per 1000
<b>White Pine</b>	3 yr. Seedlings .....	3-6 in.	9.00	45.00
	8 yr. Twice Trans. ....	12-18 in.	50.00	⊞⊞⊞⊞
	Lots of 10 at 100 rate — This item Shipped Express Collect			
<b>Red Pine</b>	8 yr. Twice Trans. ....	18-24 in.	75.00	⊞⊞⊞⊞
	Lots of 10 at 100 rate — This item Shipped Express Collect			
	4 yr. Transplants .....	6-12 in.	18.00	90.00
<b>Japanese Yew Transplants</b>	8 yr. Twice Trans. ....	12-18 in.	50.00	⊞⊞⊞⊞
	Lots of 10 at 100 rate — This item Shipped Express Collect			
	8 yr. Twice Trans. ....	18-24 in.	75.00	⊞⊞⊞⊞
Lots of 10 at 100 rate — This item Shipped Express Collect				
<b>Japanese Yew Transplants</b>	Spreading Cuspidata .....	4-6 in.	40.00	⊞⊞⊞⊞
	Spreading Cuspidata .....	6-8 in.	60.00	⊞⊞⊞⊞
	Hatfield (Upright Conical) .....	4-7 in.	40.00	⊞⊞⊞⊞
Hicksi (Columnar) .....		7-10 in.	50.00	⊞⊞⊞⊞
Lots of 10 at 100 rate — These items Shipped Express Collect				



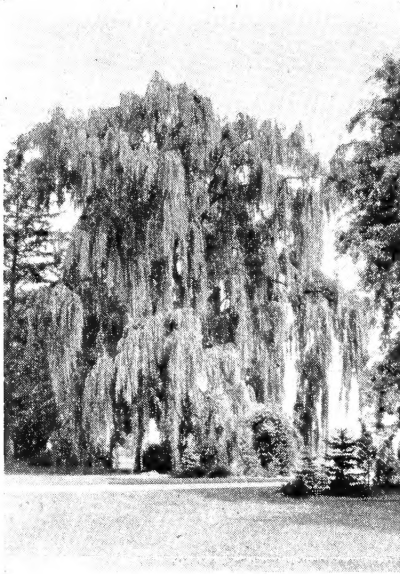
Three Mussers and Hemlock Hedge

			Per 100	Per 1000
<b>Norway Spruce</b>	4 yr. Transplants .....	8-16 in.	18.00	90.00
	8 yr. Twice Trans. ....	14-18 in.	50.00	⊞⊞⊞⊞
	Lots of 10 at 100 rate — This item Shipped Express Collect			
<b>Canadian Hemlock</b>	8 yr. Twice Trans. ....	18-24 in.	75.00	⊞⊞⊞⊞
	Lots of 10 at 100 rate — This item Shipped Express Collect			
	4 yr. Seedlings .....	6-12 in.	16.00	80.00
<b>American Arborvitae</b>	6 yr. Transplants .....	8-14 in.	35.00	⊞⊞⊞⊞
	Lots of 10 at 100 rate — This item Shipped Express Collect			
	7 yr. Transplants .....	10-15 in.	50.00	⊞⊞⊞⊞
<b>Pyramidal Arborvitae</b>	Lots of 10 at 100 rate — This item Shipped Express Collect			
	8 yr. Twice Transplants ..	12-18 in.	75.00	⊞⊞⊞⊞
	Lots of 10 at 100 rate — This item Shipped Express Collect			
<b>American Arborvitae</b>	4 yr. Seedlings .....	5-10 in.	10.00	50.00
	5 yr. Transplants .....	6-12 in.	20.00	⊞⊞⊞⊞
	4 yr. Transplants .....	5-8 in.	30.00	⊞⊞⊞⊞

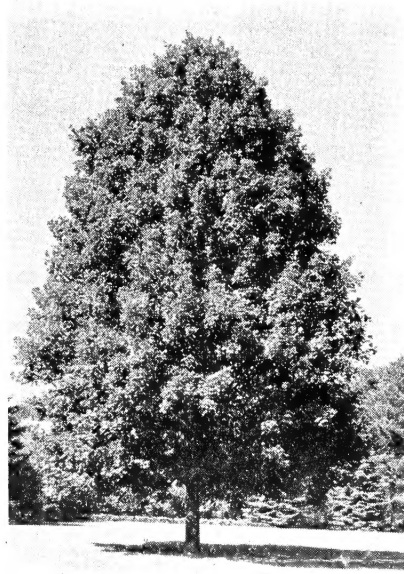
**BEAUTY ALL THE YEAR AROUND**



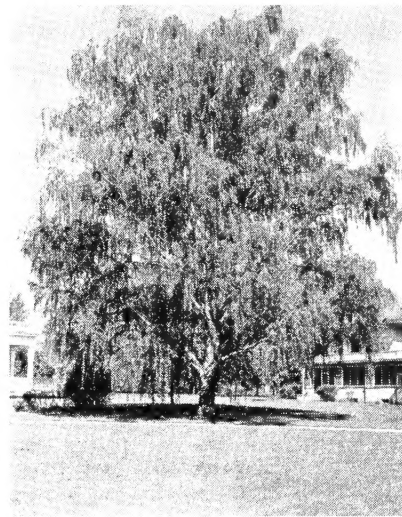
# Musser Shade, Nut & Flowering Trees



Weeping Willow 6-8 ft.



Norway Maple 6-8 ft.



Cut-Leaf Birch 4-5 ft.

QUALITY TREES, Best Sizes for  
SUCCESSFUL TRANSPLANTING

One each of

**All 3**

Best Shade

**TREES**

Pictured

For ONLY

**\$9.00**

Shipped Exp. Coll.

**WEeping WILLOW** (Wisconsin). Very rapid growing tree with graceful drooping branches. Will succeed in any location, but prefers moist soil. Especially effective near pools or river banks, along drives or as specimen plants. Frequent cutting back gives a thicker growth of bright green twigs. Grows 25 to 30 feet tall.

**NORWAY MAPLE**. One of the best trees for street planting or for lawn specimens where good form and shade are needed. Its dense leaves are rich green in color and are held on tree about two weeks longer than those of other maples. Grows 50 to 60 ft. tall.

**CUT-LEAF WEEPING BIRCH** (Silver Birch). Graceful white-barked tree with delicate drooping branches. One of the few shade trees under which grass will grow. The white bark, which develops a year or two after planting is beautiful in all seasons. Grows 20 to 30 ft. tall.

**PIN OAK**. Most wanted shade tree for street and lawn planting. Fastest growing of the Oaks. Pyramidal form makes pruning unnecessary, and permits grass to grow under branches. Adapts itself to all locations. Not often affected by insect pests or diseases. Grows 30 to 40 ft. tall.

**LOMBARDY POPLAR**. Tall columnar tree, ideal for use as screen or windbreak. Thrives in wide range of soil and climatic conditions. Grows unusually fast, and requires no pruning. Grows 60 to 80 ft. tall.

**MOUNTAIN ASH**. One of the most ornamental of all trees. Bears large clusters of bright orange-red berries from mid-summer until late fall. Grows 20 to 30 ft. tall.

**NEW CHINESE CHESTNUT** (Blight resistant). Will bear large, sweet, delicious nuts two years after planting. Very fast growing. Valuable for ornamental effect and shade as well as for its fruit. Plant 2 or more for pollination. Grows 30 to 40 ft. tall.

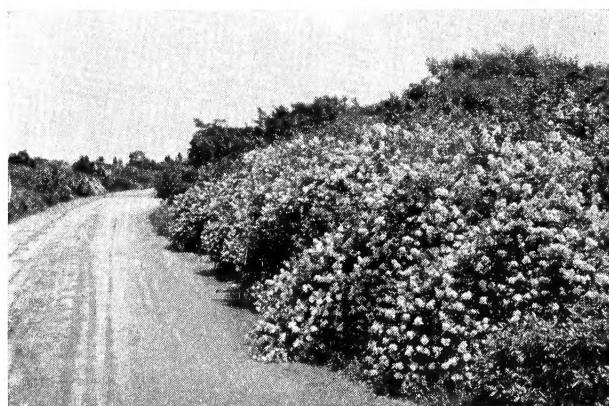
**RED-FLOWERING DOGWOOD**. Outstanding among ornamental trees. A profusion of showy rose colored petals in spring is followed by deep red foliage in fall. Grows 15 to 20 ft. tall.

**WHITE-FLOWERING DOGWOOD**. One of the most beautiful of all spring flowering trees. Lovely four-petaled white blossoms are borne on spreading branches early in spring. Leaves turn brilliant red in fall. Valuable when used in lawn border or as specimen plants. Unsurpassed when used in naturalizing effect. Grows 15 to 20 ft. tall.

**MAGNOLIA** (Saucer Magnolia). One of the most hardy of the Magnolias. Large fragrant rose-colored flowers cover the tree in early spring. Blossoms when very small. Select sheltered location so flower buds will not be injured by late frosts. Grows 10 to 15 ft. tall.

Actual Size	Each	Per 3	Per 10	Per 100
6-8 ft.	\$3.50	\$ 9.50	\$28.00	\$250.00
6-8 ft.	3.50	9.50	28.00	250.00
4-5 ft.	3.50	9.50	28.00	250.00
6-8 ft.	6.00	16.50	50.00	450.00
6-8 ft.	1.25	3.50	10.00	85.00
6-8 ft.	3.50	10.00	32.50	300.00
3-4 ft.	4.00	11.50	35.00	300.00
1½-2 ft.	4.00	11.50	35.00	300.00
2-3 ft.	3.00	8.50	25.00	225.00
1½-2 ft.	5.00	13.50	45.00	400.00

(All trees shipped express collect. Complete planting instructions with order acknowledgment.)



## ROSE HEDGE

(Rosa Multiflora)

[ A Winter Paradise  
for Wild Bird Life ]

A LIVING FENCE. A tall growing, very thorny shrub, like the wild rose. Very hardy even in poor soil. Grows 2 to 3 feet in a single season to an ultimate height of 6 to 8 feet. Ideal for use as living fence for farm use — keeps in cattle, horses, sheep and goats. Makes fast growing ground cover. Pinkish white blossoms literally cover plant in June. These are followed by profusion of large red berries which attract game birds such as grouse, pheasant, and partridge, as well as smaller birds. During winter its arching branches hold the snow and ice to provide protection which often means the difference between life and death to wild birds.

PRE-PAID

**SPECIALS**

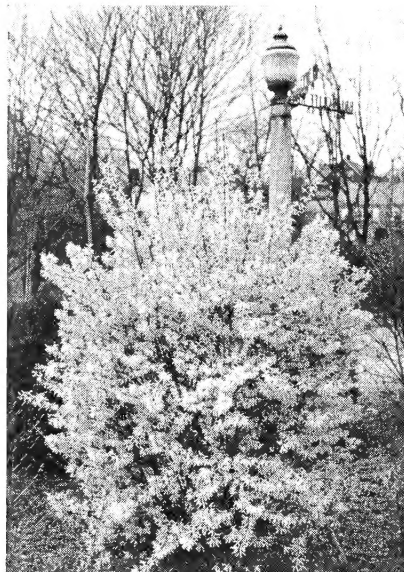
Size  
1-1½ ft.

Per 25  
\$3.00

Per 100  
\$12.00

1000 ROSA MULTIFLORA — \$90.00 EXPRESS COLLECT

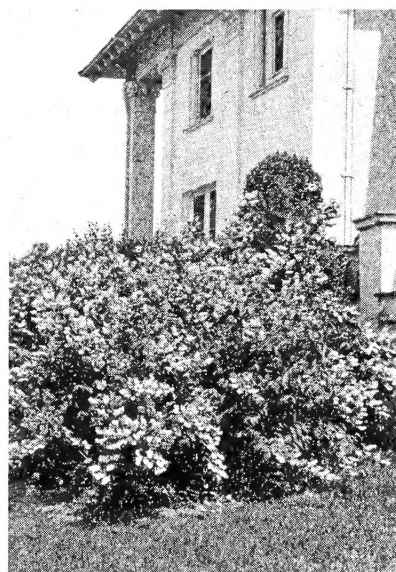
# Musser Forests *Sensational* FLOWERING SHRUB OFFER



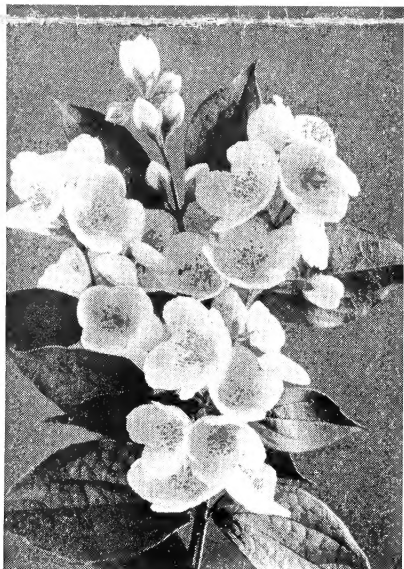
**FORSYTHIA (Golden Bell)**  
(Yellow Flower)



**FLOWERING QUINCE**  
(Red Flower)



**DEUTZIA (Pride of Rochester)**  
(White Flower)



**SWEET MOCK ORANGE**  
(Waxy White Flower)



**SPIREA (Bridalwreath)**  
(White Flower)

**FORSYTHIA (Golden Bell)**

Long slender branches entirely covered with dainty yellow blossoms are the first sign of Spring. Maturity height, 8-10 ft.

**RED FLOWERING QUINCE**

This is the old-fashioned Fire Bush. A gorgeous sight with its scarlet blossoms in April and May. Maturity height, 5-6 ft.

**DEUTZIA (Pride of Rochester)**

A perfect mass of lovely double white flowers tinged with pink in June. Grows in sun or partial shade. Maturity height, 6-8 ft.

**SWEET MOCK ORANGE**

An old favorite with all gardeners. Exquisitely fragrant waxy white flowers in May/June. Maturity height, 8-10 ft.

**SPIREA (Bridalwreath)**

Tiny double white flowers by the thousands are borne like garlands along slender graceful branches. Maturity height, 5-6 ft.

One each of

**All 5**

Hardy, Well Branched

**SHRUBS**

EXPERTLY Pruned  
for  
PROPER Planting

1 to 1½ feet tall

for only

**\$3.00**

Postpaid

One each of ALL 5 SHRUBS

1 to 1½ feet tall, ONLY **\$3.00** Postpaid

MUSSER FORESTS, Inc. — INDIANA, PA.